



The Sharpfin Project

Patching Your Reciva Radio

Instructions for patchserver version 0.4

September 29th 2007

Patching the Reciva Radio

The Reciva based radios contain an embedded 'barracuda' module, which is a small computer, running Linux. The Sharpfin project goals are to provide alternative software for this radio, putting the control of the functionality directly with the end user.



These patch instructions assume that you are a Windows user, and a novice. A command-line version of the patchserver is available for Linux users.

Warning

Firstly, a word of warning. The barracuda module has no accessible hardware serial port, it does not have a sophisticated bootloader, and does not provide network access unless the Reciva radio application (or alternative) is successfully running.

If you manage to stop your radio booting, your only recovery mechanism is to use the JTAG port on the back of the module. Note that at the present time, this has not been actively perused.

There are protection mechanisms in place to try and prevent this. The apps disk is write protected, and our upgrade patchfiles do not tamper with any of the reciva installed applications or configurations.

How to Patch ...

The patching is performed by using the radio's firmware upgrade system, and for that, we need an alternative upgrade server.

Download the patchserver (and demo patchfile for testing)

- The Windows version requires that you install cygwin
 - Download and install this from: www.cygwin.com
- Visit http://www.sharppin.zevv.nl/index.php/Enabling_Login and download:
 - The patchserver for your computer
 - A patchfile
- Unzip the patchserver onto your hard-disk
- Unzip the patchfile you have downloaded into the same directory.

Stop Services

- If you have a DNS server or Web server running on your machine, stop it now.

Ready Your Radio

- If you have previously installed the ssh login server: It is recommended that you uninstall it. Reciva application memory max requirements – 90%, ssh server memory requirements - 9%, sharpfin-base memory requirements – 8%. If you have both the ssh and sharpfin patches installed, you may experience problems listening to some radio stations. (Note when not listening to a station, the reciva application can require as little as 35% of the memory).

Find Out all of Your Addresses

There are 5 network configuration parameters you will need to know when you patch your radio. The first set of parameters you will find on your PC (the one on which the patchserver will run).



- Run a command shell (Start / Run, and type cmd, or search for cmd if you are using Vista)
- At the command prompt, type 'ipconfig'
- In the message that scrolls past, you should see a section similar to this:

```
Link-local IPv6 Address . . . . . : fe80::d518:8cf:dd4d:b784%10
IPv4 Address. . . . . : 192.168.2.17
Subnet Mask . . . . . : 255.255.255.0
Default Gateway . . . . . : 192.168.2.1
```

- Note the Ipv4 Address (this is your PCs Address), the Subnet Mask and Default Gateway.
- Write them down here:

PC Address: _____
Subnet Mask: _____
Default Gateway: _____

- Next type 'nslookup www.reciva.com'
- In the reply you will see something like the following at the top of the reply:

```
Server: 192.168.2.1
Address: 192.168.2.1:53
```

- Make a note of the server's address (without the :53) – this will probably be the same address as your Default Gateway.

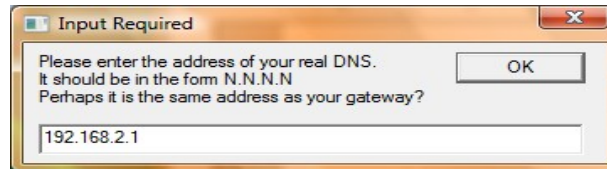
DNS: _____

- Next, switch on your radio, and select Configure / Network Config / View
- Move through the menus
- Make a note of the IP Address

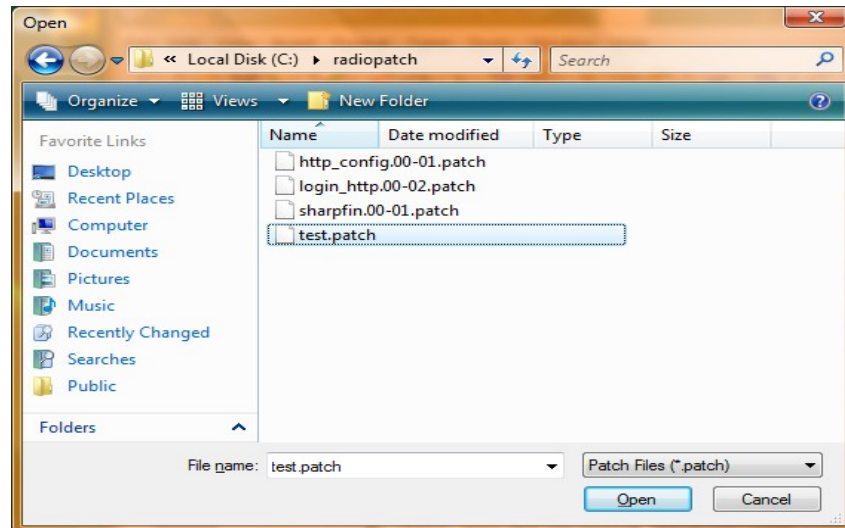
Radio Address: _____

Run the patchserver

- Start the patchserver, by double-clicking on the patchserver.exe file (or run ./patchserver on a Linux machine)
- Read Carefully, and accept the agreement
- You will then be prompted for the address of your Domain Name Server, which you must type your (**DNS**) you identified on the previous page.



- Next, you will be presented with a file-browse dialog, which you must use to select your patchfile. Start by selecting **sharpfin-test.patch** (a benign demo patchfile):



- The patchfile's readme file will automatically be opened in Notepad for you to read.
- The server itself will now launch. You may have to enable the application to work through your firewall at this stage.

```
cmd: .\patchserver-commandline.exe

*****
* SHARPPFIN RADIO PATCH SERUER *
* Press ENTER to exit this server *
*****

1. Stop any Web or DNS server on this machine
2. Configure your radio to use this machine as the DNS server
3. Connect your radio to the network
4. Perform radio upgrade
5. On completion, radio will reboot

Setting nameserver to: 192.168.2.1
Patch file is C:\radiopatch\test.patch

patchserver: Running webserver on port 80
patchserver: running DNS Server on port 53
webserver: waiting for connections ...
dnssever: waiting for connections ...
```

Turn on the Radio and Configure the DNS



- The next step is to turn on your Reciva Radio, and configure your DNS to use the computer on which the patchserver is running.
- Select Configure / Network Config / Edit Config
- When prompted for Auto (DHCP)? Select No



- Enter your (**Radio Address**) first
- Enter your (**Subnet Mask**) next
- Enter your (**Default Gateway**) next
- Then enter your (**PC Address**) instead of the DNS
- Do not enter a DNS Server #2
- You will see the patchserver output screen update during this activity

Perform an Upgrade

- To patch the radio, select Configure / Upgrade Firmware
- When Prompted "Are You Sure?", Select Yes
- The upgrade process will download the patch file from your patch server and install
- The "**sharpfin-test.patch**" patchfile will display a message on the radio screen for 5 seconds
- Following upgrade, the radio will re-boot



Output of sharpfin-test.patch

Select Your Patchfile

Once you are comfortable with the process, you can download and install a real patchfile. *Note that you can also apply .install files via the patchserver, once the sharpfin-base patch has been applied.*



The “**sharpfin-base_xxx.patch**” patch file which can be found here:

- http://www.sharppfin.zevv.nl/index.php/Enabling_Login

This is the basic patchfile required to give you access to the radio, and install a webserver, from which you will be able to perform maintenance in future. When you apply the patch, you will see the following on the LCD.

```
Upgrading  
Firmware
```

The radio is downloading the patch from the patchserver.

```
Patching  
Starting
```

The radio disk has been made writeable, and the Sharpfin patch script is running.

```
Patching  
Sharpfin Base
```

The base Sharpfin files are being installed.

```
Patching  
Telnet Server
```

The Telnet Server Configuration files, are being installed. This includes creating the admin and user accounts.

```
Patching  
Web Server
```

The Web server files are being installed in /opt/webserver.

```
Patching Done  
rebooting
```

The disk is now read-only again, and the radio will reboot.

Finish Up

Finally, there are just two steps remaining:

- Stop the patchserver by pressing ENTER.
- Re-configure the Radio's DNS server (probably by re-enabling DHCP in Config / Network Config / Edit Network)

We Recommend Uninstalling this Sharpfin Patch before upgrading with an official Reciva update, using the 'sharpfin-uninstall.install' addon.

Frequently Asked Questions



I've installed Cygwin, but the patchserver cannot find it, and give the error cygwin1.dll not found.

Once installed, the cygwin programs need to be put into the system Path. The patchserver checks the path for Cygwin, and if it is not found, guesses that you installed it in the default c:\cygwin directory. If it cannot find either, it cannot continue. Either modify the path to include cygwin's bin directory, or install cygwin in the default c:\cygwin.

I've run patchserver, and get the error message 'cannot bind to port', and the program exits.

The patchserver needs to run a Domain Name server and Web Server (ports 53 and 80 respectively). You must ensure that any existing DNS or Web server (check your P2P software) are shut down. If patchserver was aborted, it is possible it left these ports open. The operating system will free them up within a minute or so.

I switch on my radio, and it says “Cannot Connect to Network”

You need to double check that you have set the correct DNS address on the radio. When you boot the radio, you should see several dns queries go past on the patchserver output screen.

Patchserver Reports DNS Server TIMEOUT

This is a symptom of a slow local or global network connection. Domain Name Server lookups provide no guarantee of response, so applications tend to try again and again if the server does not respond in time. Patchserver is acting as a relay, and will TIMEOUT if it does not receive a response from your real DNS in 3 seconds. This is nothing to worry about, as the radio will retry several times. If the radio reports DNS problems, simply try again – this is non-fatal.

My Computer Complains that patchserver is Untrusted

We have not digitally signed the patchserver, so you will have to agree to run the program without its signature.

My Computer Asks me if I want to Block This Application

Your computer is running a firewall, and the patchserver needs to connect to the internet to look up names. You need to select Unblock/Enable to allow the patchserver to work. Check your firewall software for further details.

Something Else Doesn't Work

Please provide us with feedback on the Sharpfin website:

http://www.sharpfin.zevv.nl/index.php/Talk:Enabling_Login



The Sharpfin project goals are to produce a completely open source internet radio application for the Reciva based radios.

The Sharpfin project can be found at <http://www.sharpfin.zevv.nl/>.

The Sharpfin project will not be party to and does not condone any attempt to reverse engineer any of Reciva's proprietary applications or protocols.

The Sharpfin project will not be held responsible for losses or damage through the use of any of their software or methods. (you must agree to this in order to patch your radio).